

# Sinhgad Business School

19/15, Erandwane, Smt. Khilare Marg, Off Karve Road, Pune- 411004

## Mandatory Disclosure

---

### 1. AICTE Detail

<b>AICTE File No</b>	F.NO. 08/01/MHA/MBA/2008/0013
<b>Date &amp; Period of last approval</b>	: Year 2010-11

### 2. Name and Address of the Institution:

<b>Name</b>	<b>SINHGAD BUSINESS SCHOOL, PUNE</b>
<b>Address</b>	19/15, Erandwane, Smt. Khilare Marg, Off Karve Road, Pune- 411004
<b>City and Pin Code</b>	Pune- 411004
<b>Phone No with STD Code:</b>	(020) – 25431001
<b>Fax No with STD code.</b>	(020) – 25458520
<b>Office hours at the Institution</b>	8 Hrs ( 10.00am to 6.00pm)
<b>Academic hours at the Institution</b>	8 Hrs ( 10.00am to 6.00pm)
<b>E-Mail:</b>	<a href="mailto:msathe@sinhgad.edu">msathe@sinhgad.edu</a>
<b>Website</b>	<a href="http://www.sinhgad.edu">http://www.sinhgad.edu</a>
<b>Nearest Railway Station(dist in Km)</b>	Pune Railway Station (7 Km)
<b>Nearest Airport (dist in Km)</b>	Lohgaon Airport( 15 Km)

### 3. Type of Institution

<b>Type</b>	Private - Self Financed
<b>Category(1) of the Institution</b>	Non Minority
<b>Category(2) of the Institution</b>	Co-Education

### 4. Name of the Organization running the Institute

<b>Name of the organization</b>	Sinhgad Technical Education Society
<b>Type of the organization</b>	Society
<b>Address of the organization</b>	19/15, Erandwane, Smt. Khilare Marg, Off Karve Road, Pune- 411004
<b>Registered with</b>	Asst. Charity Commissioner
<b>Registration date</b>	12 <sup>th</sup> Aug. 1993
<b>Website of the organization</b>	<a href="http://www.sinhgad.edu">www.sinhgad.edu</a>

### 5. Name of the Affiliating University

<b>Name</b>	University of Pune
<b>Address</b>	Ganeshkhind Pune-411007
<b>Website Address</b>	<a href="http://www.unipune.ac.in">http://www.unipune.ac.in</a>
<b>Latest affiliation Period</b>	2010-11

## 6. Name & Address of the Director:

<b>Name</b>	Prof. Madhuvanti Sathe
<b>Exact Designation</b>	Director
<b>Phone Number with STD Code.</b>	(020) – 25434314
<b>Fax Number with STD Code</b>	(020) – 25458520
<b>E-Mail</b>	<a href="mailto:msathe@sinhgad.edu">msathe@sinhgad.edu</a>
<b>Highest Degree</b>	M.Com, FICWA
<b>Field of Specialization</b>	Finance

## 7. Governing Body Members

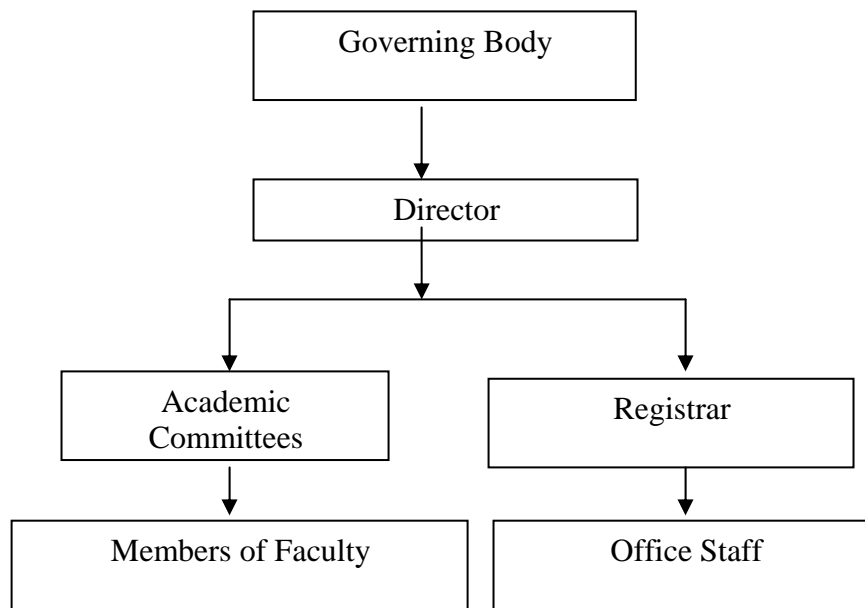
<b>Name of Governing Body Member:</b>	
<b>Name</b>	<b>Designation</b>
Prof. M. N. Navale Founder President, STES	Chairman
Dr. (Mrs.) Sunanda M. Navale Founder Secretary ,STES	Member
Mr. G.K.Shahani, Director Project, STES	Member
Mr. Ratnakar Kulkarni, Director, STES	Member
Prof. A.V. Deshpande Registrar, STES	Member
Nominee, WRC AICTE, Mumbai	Member
Nominee of DTE Mumbai	Member
Nominee, AICTE, New Delhi	
Nominee, University of Pune	Member
Nominee, Govt. of Maharashtra	Member

Dr. Aditi Markale, Professor , SBS	Member
Prof. Dhananjay Mandlik, Associate Professor	Member
Prof. Madhuvanti Sathe, Director, SBS	Member & Secretary
<b>Frequency of Meeting</b>	2 times in Year
<b>date of last meeting</b>	6 <sup>th</sup> December, 2010

### 8. Academic Advisory Body

<b>Name of Academic Advisory Body:</b>	
<b>Name</b>	<b>Designation</b>
Prof. M.N. Navale Nominee of the STES	Chairman
Dr. (Mrs.) Sunanda M. Navale Nominee of the STES	Member
Dr. A.V. Deshpande Nominee of the STES	Member
Dr. Aditi Markale, Professor , SBS	Member
Prof. Dhananjay Mandlik, Associate Professor	Member
Prof. Madhuvanti Sathe Director, SBS	Member Secretary
<b>Frequency of Meeting</b>	2 times in Year
<b>date of last meeting</b>	

## 9. Organisational Chart



## 10. Student feedback mechanism on Institutional Governance/faculty performance

The institute has mechanism to take the feedback in the following forms:

- a. In the academic year two times the computerised feedback regarding the faculty performance, general administration of department & institute is obtained.

## 11. Grievance redressal mechanism for faculty, staff and students:

- ✓ The expert committee of two Governing Body members visits Institute twice a month for taking overall review of smooth functioning of the institute and also to sort-out issues of grievances if any. The said committee collects relevant information from Head of the Institute (Director), Faculties, Staff and Students to decide further plan of action.

- ✓ Faculty Members also take self appraisal feedback from students for self improvement.

## 12. Department Detail

<b>Name of the Department</b>	Management		
<b>Course</b>	MBA		
<b>Level</b>	Post Graduate		
<b>First Year of Approval</b>	June 2008		
<b>Year wise Sanctioned Intake</b>	<b>A.Y. 2010-11</b>		<b>A.Y.2009-10</b>
	120		60
<b>Year wise Actual Admissions</b>	<b>A.Y. 2010-11</b>		<b>A.Y.2009-10</b>
	120		60+1(JK)
<b>Cut off marks – General quota</b>	<b>A.Y. 2010-11</b>		<b>A.Y.2009-10</b>
			85
<b>% Students passed with Distinction</b>	<b>A.Y. 2010-11</b>		<b>A.Y.2009-10</b>
	NA	NA	NA
<b>% Students passed with First Class</b>	<b>A.Y. 2010-11</b>		<b>A.Y.2009-10</b>
	NA	NA	17 – Sem IV
<b>Students Placed</b>	<b>A.Y. 2010-11</b>		<b>A.Y.2009-10</b>
	Not Applicable		( In Process)
<b>Average Pay package, Rs./Year</b>	<b>A.Y. 2010-11</b>		<b>A.Y.2009-10</b>
	3.5LPA		Not Applicable
<b>Students opted for Higher Studies</b>	<b>A.Y. 2010-11</b>		<b>A.Y.2009-10</b>
			Not Applicable
<b>Accreditation</b>	Not eligible		

<b>Status of the course</b>	
<b>Doctoral Courses</b>	No
<b>Foreign Collaborations, if any</b>	No
<b>Professional Society Memberships</b>	
<b>Professional activities</b>	<ul style="list-style-type: none"> <li>✓ FDP</li> <li>✓ Guest Lectures</li> <li>✓ Seminar</li> <li>✓ Workshops</li> <li>✓ Industrial Visit</li> <li>✓ Industry-Institute Strengthening Activity</li> </ul>
<b>Consultancy Activities</b>	
<b>Grants Fetched</b>	
<b>Departmental Achievements</b>	
<b>Distinguished Alumni</b>	

Name of Teaching Staff: Prof. Madhuvanti Sameer Sathe



Photo

**Designation:** Director

**Department :** Management

**Date of Joining the Institution:** 24/07/2009

<b>Qualifications with Class / Grade</b>	<b>UG :</b> B.com ( Distinction)	<b>PG :</b> M.com, (Distinction) ADCA (Distinction)	<b>Ph. D. :</b> FICWA (Fellow of Institute of Cost and Works Accountants of India)
<b>Total Experience in Years</b>	<b>Teaching :</b> 5.5	<b>Industry :</b> 11	<b>Research :</b> 4
<b>Papers Published</b>	<b>National :</b> 4		<b>International :</b> 3
<b>Papers Presented in Conferences</b>	<b>National :</b> 4		<b>International :</b>
<b>PhD Guide? Give field &amp; University</b>	<b>Ph. D. Guide :</b>  <b>Field :</b>		<b>University :</b>
<b>PhDs / Projects Guided</b>	<b>Ph.D. :</b>		<b>Projects at Masters level :</b> 50

**Books Published / IPRs/ Patents :**

**Professional Memberships :** Follow of ICWAI

**Consultancy Activities :**

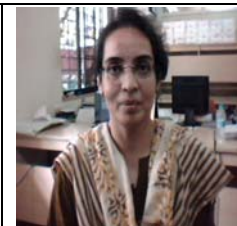
**Awards :**

**Grants fetched :**

**Interaction with Professional Institutions :** ICWAI



Name of Teaching Staff: DR ADITI AMOD MARKALE



**Designation:** PROFESSOR

**Department :** Management

**Date of Joining the Institution:** OCTOBER 4, 2010

<b>Qualifications with Class / Grade</b>	<b>UG :</b> BSc (Statistics) (First Class with Distinction)	<b>PG :</b> MMS (First Class with Distinction)	<b>Ph. D. :</b> Awarded
<b>Total Experience in Years</b>	<b>Teaching :</b>	<b>Industry :</b> 25 years	<b>Research :</b>
<b>Papers Published</b>	<b>National :</b>		<b>International :</b>
<b>Papers Presented in Conferences</b>	<b>National :</b>		<b>International :</b>
<b>PhD Guide? Give field &amp; University</b>	<b>Ph. D. Guide :</b>  <b>Field :</b>		<b>University :</b>
<b>PhDs / Projects Guided</b>	<b>Ph.D. :</b>		<b>Projects at Masters level :</b>

**Books Published / IPRs/ Patents :**

**Professional Memberships :**

**Consultancy Activities :**

**Awards :**

**Grants fetched :**

**Interaction with Professional Institutions :**

**Name of Teaching Staff:** Prof. Dhananjay Tukaram Mandalik



**Designation:** Associate Professor

**Department :** Management

**Date of Joining the Institution:** 03/09/2007

<b>Qualifications with Class / Grade</b>	<b>UG :</b> B.Sci(Physics)	<b>PG :</b> MCM, M.Phil, MCA,	<b>Ph. D. :</b>
<b>Total Experience in Years</b>	<b>Teaching :</b> 4.4	<b>Industry :</b> 8.6	<b>Research :</b> 4
<b>Papers Published</b>	<b>National :</b>		<b>International :</b>
<b>Papers Presented in Conferences</b>	<b>National :</b>		<b>International :</b>
<b>PhD Guide? Give field &amp; University</b>	<b>Ph. D. Guide :</b>  <b>Field :</b>		<b>University :</b>
<b>PhDs / Projects Guided</b>	<b>Ph.D. :</b>		<b>Projects at Masters level :</b>

**Books Published / IPRs/ Patents :**

**Professional Memberships :**

**Consultancy Activities :**

**Awards :**

**Grants fetched :**

**Interaction with Professional Institutions :**

Name of Teaching Staff: SANTOSH GORE



**Designation:** Associate Prof.

**Department :** MBA

**Date of Joining the Institution:** 01-07-2008

<b>Qualifications with Class / Grade</b>	<b>UG :</b> B. Sc.	<b>PG :</b> MBA	<b>Ph. D. :</b> -
<b>Total Experience in Years</b>	<b>Teaching :</b> 7 yrs	<b>Industry :</b> 4	<b>Research :</b> -
<b>Papers Published</b>	<b>National :</b> -		<b>International :</b> -
<b>Papers Presented in Conferences</b>	<b>National :</b> -		<b>International :</b> -
<b>PhD Guide? Give field &amp; University</b>	<b>Ph. D. Guide :</b> <b>Field :</b>		<b>University :</b>
<b>PhDs / Projects Guided</b>	<b>Ph.D. :</b>		<b>Projects at Masters level :</b> 50
<b>Books Published / IPRs/ Patents :</b>			
<b>Professional Memberships :</b>			
<b>Consultancy Activities :</b>			
<b>Awards :</b>			
<b>Grants fetched :</b>			
<b>Interaction with Professional Institutions :</b>			

Name of Teaching Staff: Mrs. Bharati Kumar



Designation: Associate Professor

Department : Management

Date of Joining the Institution: 19<sup>th</sup> Jan 2010

Qualifications with Class / Grade	<u>UG</u> : BSc (First Class with Distinction 72%)	<u>PG</u> : M.S.W (First Class with Distinction 70%) MMS (HR) (First Class with Distinction)	<u>Ph. D.</u> : Persuing
Total Experience in Years	<u>Teaching</u> : Twelve Years	<u>Industry</u> : Two years	<u>Research</u> :
Papers Published	<u>National</u> : "Women in Work Place" Published in MBA Review Magazine of ICFAI Press		<u>International</u> :
Papers Presented in Conferences	<u>National</u> :		<u>International</u> :
PhD Guide? Give field & University	<u>Ph. D. Guide</u> :  Field :		<u>University</u> :
PhDs / Projects Guided	<u>Ph.D.</u> :		<u>Projects at Masters level</u> : Acted as Guide for various MBA nad MPM students.

Books Published / IPRs/ Patents : Personnel Administration System and Procedures Published by Nirali Prakashan

Professional Memberships :

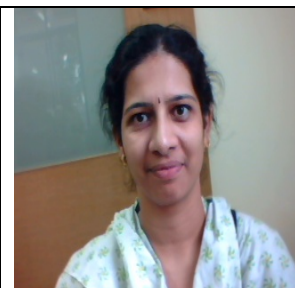
Consultancy Activities :

Awards :

Grants fetched :

Interaction with Professional Institutions :

Name of Teaching Staff: Prajakta Parag Mahajani



**Designation:** Assistant Professor

**Department :** Management

**Date of Joining the Institution:** 17/07/2007

<b>Qualifications with Class / Grade</b>	<b>UG :</b> B.Com.	<b>PG :</b> M.Com., M.B.A. (HR)	<b>Ph. D. :</b>
<b>Total Experience in Years</b>	<b>Teaching :</b> 3.5 yrs	<b>Industry :</b> 4 yrs	<b>Research :</b>
<b>Papers Published</b>	<b>National :</b>		<b>International :</b> NA
<b>Papers Presented in Conferences</b>	<b>National :</b> Jain University, Bangalore		<b>International :</b> NA
<b>PhD Guide? Give field &amp; University</b>	<b>Ph. D. Guide :</b> NA <b>Field :</b>		<b>University :</b> NA
<b>PhDs / Projects Guided</b>	<b>Ph.D. :</b> NA		<b>Projects at Masters level :</b> NA
<b>Books Published / IPRs/ Patents :</b> NA			
<b>Professional Memberships :</b> NA			
<b>Consultancy Activities :</b> NA			
<b>Awards :</b> NA			
<b>Grants fetched :</b> NA			
<b>Interaction with Professional Institutions :</b> NA			

Name of Teaching Staff: Mrs. Tejaswinee N. Ingle



**Designation:** Asst. Professor

**Department :** Management

**Date of Joining the Institution:** 01/08/2007

<b>Qualifications with Class / Grade</b>	<b>UG :</b> B.Sc. 1 <sup>st</sup> Class	<b>PG :</b> M.B.A.(Mktng) 1 <sup>st</sup> Class	<b>Ph. D. :</b> Pursuing
--	--	--	--------------------------

<b>Total Experience in Years</b>	<b>Teaching :</b> 5yrs.	<b>Industry :</b> 1yr.	<b>Research :</b>
----------------------------------	----------------------------	------------------------	-------------------

<b>Papers Published</b>	<b>National :</b> 2	<b>International :</b>
-------------------------	---------------------	------------------------

<b>Papers Presented in Conferences</b>	<b>National :</b> 2	<b>International :</b>
--	---------------------	------------------------

<b>PhD Guide? Give field &amp; University</b>	<b>Ph. D. Guide :</b> Dr. P.W. Kale <b>Field :</b> Marketing	<b>University :</b> Amravati University
---	---	---

<b>PhDs / Projects Guided</b>	<b>Ph.D. :</b>	<b>Projects at Masters level :</b> 40
-------------------------------	----------------	--

**Books Published / IPRs/ Patents :**

**Professional Memberships :**

**Consultancy Activities :**

**Awards :**

**Grants fetched :**

**Interaction with Professional Institutions :**

**name of Teaching Staff:** Mrs.Wadghule Rameshwari Sushant



**Designation:** Assistant Professor (Previous Lecture)

**Department :** Management

**Date of Joining the Institution:** 1<sup>st</sup> August 2001

<b>Qualifications with Class / Grade</b>	<b>UG :</b> B.Pharmacy First Class	<b>PG</b> :MBA(HR) First Class	<b>Ph. D. :</b>
<b>Total Experience in Years</b>	<b>Teaching :</b> 1.5 yrs	<b>Industry :</b> -	<b>Research :</b> -
<b>Papers Published</b>	<b>National :</b>		<b>International :</b>
<b>Papers Presented in Conferences</b>	<b>National :</b>		<b>International :</b>
<b>PhD Guide? Give field &amp; University</b>	<b>Ph. D. Guide :</b>  <b>Field :</b>		<b>University :</b>
<b>PhDs / Projects Guided</b>	<b>Ph.D. :</b>		<b>Projects at Masters level</b> :
<b>Books Published / IPRs/ Patents :</b>			
<b>Professional Memberships :</b>			
<b>Consultancy Activities :</b>			
<b>Awards :</b>			
<b>Grants fetched :</b>			
<b>Interaction with Professional Institutions :</b>			

**Name of Teaching Staff:** ULLAS PRAMANIK



**Designation:** Asst. Professor

**Department :** Management

**Date of Joining the Institution:** 18/08/2010

<b>Qualifications with Class / Grade</b>	<b>UG :</b> B.Sc. First Class	<b>PG :</b> M.B.A. First Class	<b>Ph. D. :</b>
<b>Total Experience in Years</b>	<b>Teaching :</b> 02 yrs	<b>Industry :</b> 10 yrs	<b>Research :</b> Nil
<b>Papers Published</b>	<b>National :</b> Nil		<b>International :</b> Nil
<b>Papers Presented in Conferences</b>	<b>National :</b> Nil		<b>International :</b> Nil
<b>PhD Guide? Give field &amp; University</b>	<b>Ph. D. Guide :</b> NA <b>Field :</b> NA		<b>University :</b> NA
<b>PhDs / Projects Guided</b>	<b>Ph.D. :</b> Nil		<b>Projects at Masters level :</b> 40

**Books Published / IPRs/ Patents :** NA

**Professional Memberships :** NA

**Consultancy Activities :** NA

**Awards :** NA

**Grants fetched :** NA

**Interaction with Professional Institutions :**NA



**Name of Teaching Staff:** Avinash Bhaskar Joshi



**Designation:** Asst Professor

**Department :** Management

**Date of Joining the Institution:** 23/8/2010

<b>Qualifications with Class / Grade</b>	<b>UG :</b> B.Sc ,First Class	<b>PG :</b> M.M.S, Distinction	<b>Ph. D. :</b> Submitted
<b>Total Experience in Years</b>	<b>Teaching :</b> 2	<b>Industry :</b> 18	<b>Research :</b> 4
<b>Papers Published</b>	<b>National :</b>		<b>International :</b>
<b>Papers Presented in Conferences</b>	<b>National :</b>		<b>International :</b>
<b>PhD Guide? Give field &amp; University</b>	<b>Ph. D. Guide :</b>  <b>Field :</b>		<b>University :</b>
<b>PhDs / Projects Guided</b>	<b>Ph.D. :</b>		<b>Projects at Masters level :</b> 25

**Books Published / IPRs/ Patents :** 1

**Professional Memberships :** SEBI 'Resource Person'

**Consultancy Activities :**

**Awards :**

**Grants fetched :**

**Interaction with Professional Institutions :**

**Name of Teaching Staff:** Mr. Jairaj Sasane



**Designation:** Assitant Professor

**Department :** Management

**Date of Joining the Institution:** 23 August 2010

<b>Qualifications with Class / Grade</b>	<b>UG :</b> B.Sc	<b>PG :</b> MBA	<b>Ph. D. :</b>
<b>Total Experience in Years</b>	<b>Teaching :</b> 0	<b>Industry :</b> 6	<b>Research :</b> 0
<b>Papers Published</b>	<b>National :</b>		<b>International :</b>
<b>Papers Presented in Conferences</b>	<b>National :</b>		<b>International :</b>
<b>PhD Guide? Give field &amp; University</b>	<b>Ph. D. Guide :</b> <b>Field :</b>		<b>University :</b>
<b>PhDs / Projects Guided</b>	<b>Ph.D. :</b>		<b>Projects at Masters level :</b>

**Books Published / IPRs/ Patents :**

**Professional Memberships :**

**Consultancy Activities :**

**Awards :**

**Grants fetched :**

**Interaction with Professional Institutions :**

Name of Teaching Staff: Prof. Santosh Kumar Singh



**Designation:** Assistant Professor

**Department :** Management

**Date of Joining the Institution:** 01/09/2010

**Qualifications with Class / Grade**

**UG :** B.Tech.  
(IT)

**PG :** MBA

**Ph. D. :** No

**Total Experience in Years**

**Teaching :** 4  
months

**Industry :** 0

**Research :** 0

**Papers Published**

**National :** Nil

**International :** Nil

**Papers Presented in Conferences**

**National :** Nil

**International :** Nil

**PhD Guide? Give field & University**

**Ph. D. Guide :**

**Field :**

**University :**

**PhDs / Projects Guided**

**Ph.D. :**

**Projects at Masters level :**  
Data Mining & mCRM in ICT  
Marketing, Stock Market  
Forecasting using Technical  
Analysis,

**Books Published / IPRs/ Patents :**

**Professional Memberships :** IETE Student's Forum, ISF Workshop

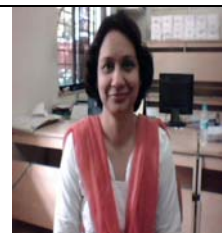
**Consultancy Activities :**

**Awards :**

**Grants fetched :**

**Interaction with Professional Institutions :**

Name of Teaching Staff: ANURADHA KHARE



**Designation:** ASSISTANT PROFESSOR

**Department :** MANAGEMENT

**Date of Joining the Institution:** 16<sup>TH</sup> AUGUST 2010

<b>Qualifications with Class / Grade</b>	<b>UG :</b> B.Com	<b>PG :</b> M. Com, PGDFM	<b>Ph. D. :</b> ---
<b>Total Experience in Years</b>	<b>Teaching :</b> 6 years	<b>Industry :</b> Nil	<b>Research :</b> Nil
<b>Papers Published</b>	<b>National :</b> Nil		<b>International :</b> Nil
<b>Papers Presented in Conferences</b>	<b>National :</b> Nil		<b>International :</b> Nil
<b>PhD Guide? Give field &amp; University</b>	<b>Ph. D. Guide :</b> Nil  <b>Field :</b> Nil		<b>University :</b> Nil
<b>PhDs / Projects Guided</b>	<b>Ph.D. :</b> Nil		<b>Projects at Masters level :</b> Five

**Books Published / IPRs/ Patents :** Nil

**Professional Memberships :** Nil

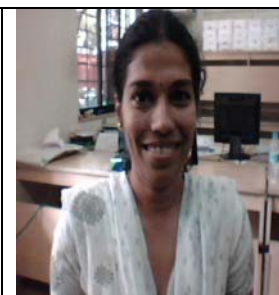
**Consultancy Activities :** Nil

**Awards :** Nil

**Grants fetched :** Nil

**Interaction with Professional Institutions :** Nil

**Name of Teaching Staff:** Mrs. KANAKA GANAPATI PRABHU



**Designation:** Asst.Professor

**Department :** MANAGEMENT

**Date of Joining the Institution:** 01<sup>ST</sup> September 2010.

<b>Qualifications with Class / Grade</b>	<b>UG :</b> B.COM, 1 <sup>ST</sup> CLASS	<b>PG :</b> M.B.A 1 <sup>ST</sup> CLASS	<b>Ph. D. :</b>
<b>Total Experience in Years</b>	<b>Teaching :</b> 3Yrs.	<b>Industry :</b> 4Yrs.	<b>Research :</b> ---
<b>Papers Published</b>	<b>National :</b> -----		<b>International :</b> -----
<b>Papers Presented in Conferences</b>	<b>National :</b> -----		<b>International :</b> -----
<b>PhD Guide? Give field &amp; University</b>	<b>Ph. D. Guide :</b>  <b>Field :</b>		<b>University :</b>
<b>PhDs / Projects Guided</b>	<b>Ph.D. :</b>		<b>Projects at Masters level</b> :

**Books Published / IPRs/ Patents :**

**Professional Memberships :**

**Consultancy Activities :**

**Awards :**

**Grants fetched :**

**Interaction with Professional Institutions :**

**Name of Teaching Staff:** Prashant Tukaram Pawar



**Designation:** Assistant Professor

**Department :** Management

**Date of Joining the Institution:** 3<sup>rd</sup> Sept 2010

<b>Qualifications with Class / Grade</b>	<b>UG :</b> B.Sc.(Agri)  II	<b>PG :</b> MBA(HR)  I	<b>Ph. D. :</b>
<b>Total Experience in Years</b>	<b>Teaching :</b> 0.4 months	<b>Industry :</b> 2.0	<b>Research :</b>
<b>Papers Published</b>	<b>National :</b>	<b>International :</b>	
<b>Papers Presented in Conferences</b>	<b>National :</b>	<b>International :</b>	
<b>PhD Guide? Give field &amp; University</b>	<b>Ph. D. Guide :</b>  <b>Field :</b>	<b>University :</b>	
<b>PhDs / Projects Guided</b>	<b>Ph.D. :</b>	<b>Projects at Masters level :</b>	

**Books Published / IPRs/ Patents :**

**Professional Memberships :**

**Consultancy Activities :**

**Awards :**

**Grants fetched :**

**Interaction with Professional Institutions :**

**Name of Teaching Staff:** Chaskar Priyanka Murlidhar



**Designation:** Librarian

**Department :** Management

**Date of Joining the Institution:** 01/08/2009

<b>Qualifications with Class / Grade</b>	<b>UG :</b> B.Com(Cost and works accounting)	<b>PG :</b> M.lib.&I.Sc.	<b>Ph. D. :</b>
<b>Total Experience in Years</b>	<b>Teaching :</b> 1.6	<b>Industry :</b>	<b>Research :</b>
<b>Papers Published</b>	<b>National :</b>		<b>International :</b>
<b>Papers Presented in Conferences</b>	<b>National :</b> 01		<b>International :</b>
<b>PhD Guide? Give field &amp; University</b>	<b>Ph. D. Guide :</b>  <b>Field :</b>		<b>University :</b>
<b>PhDs / Projects Guided</b>	<b>Ph.D. :</b>		<b>Projects at Masters level :</b>

**Books Published / IPRs/ Patents :**

**Professional Memberships :**

**Consultancy Activities :**

**Awards :** Gold Medal (University of Pune) in M.Lib. & Isc.

**Grants fetched :**

**Interaction with Professional Institutions :**

Name of Teaching Staff: Ms. Zamarrud Ansari



**Designation:** Assistant Professor

**Department :** Management

**Date of Joining the Institution:** 16<sup>th</sup> August, 2010

<b>Qualifications with Class / Grade</b>	<b>UG :</b> B.Sc. Microbiology 1 <sup>st</sup> Class	<b>PG :</b> M.B.A. Marketing 1 <sup>st</sup> class with Distinction	<b>Ph. D. :</b> Registered
<b>Total Experience in Years</b>	<b>Teaching :</b> 3 yrs	<b>Industry :</b> 3 yrs 6 mth	<b>Research :</b> Nil
<b>Papers Published</b>	<b>National :</b> One ISBN no. 978-93-80043-86-9		<b>International :</b> Nil
<b>Papers Presented in Conferences</b>	<b>National :</b> 1		<b>International :</b> 1
<b>PhD Guide? Give field &amp; University</b>	<b>Ph. D. Guide :</b> <b>Field :</b>		<b>University :</b>
<b>PhDs / Projects Guided</b>	<b>Ph.D. :</b> NIL		<b>Projects at Masters level :</b> Approx. 21 projects

**Books Published / IPRs/ Patents :** NIL

**Professional Memberships :** NIL

**Consultancy Activities :** NIL

**Awards :** NIL

**Grants fetched :** NIL

**Interaction with Professional Institutions :**



### 13. Admission Quota

<b>Entrance test/admission criteria</b>	<p>✓ Candidate must have appeared for CET conducted by the DTE, MS and for OMS Candidate any qualifying examination as CAT/JMET/MAT (Conducted in February of current year) /XAT/ATMA, also Group Discussion and Personal Interview conducted by a competent authority of Maharashtra State for current academic Year .</p> <p>✓ To become eligible for admission the candidate should score <b>30 or more marks in MBA-CET 2011 OR equivalent score of 30 marks or more in All India CET (CAT/JMET/MAT/XAT/ATMA (Conducted in February of current year))</b></p>						
	<b>Cut off Last Candidate admitted</b>		<b>A.Y.2010-11</b>		<b>A.Y.2009-10</b>		<b>A.Y.2008-09</b>
	Reserve Quota	General Quota	Reserve Quota	General Quota	Reserve Quota	General Quota	
	47	41	67	85	54	72	
<b>Fees in Rupees</b>	<b>A.Y.2010-11</b>		<b>A.Y.2009-10</b>		<b>A.Y.2008-09</b>		
	1,32,000		1,21,000		45,600		
<b>Number of fee Waivers offered</b>	<b>A.Y.2010-11</b>		<b>A.Y.2009-10</b>		<b>A.Y.2008-09</b>		
<b>Admission Calendar</b>	As per the DTE						
	<b>Sr. No.</b>	<b>Activity</b>			<b>Schedule</b>		
					<b>First Date</b>	<b>Last Date</b>	
	1.	Sale of the Information Brochure at select post offices.			3 <sup>rd</sup> Week of January 2011		
	2.	Online submission of the "CET Application Form" through computer connected to Internet on the web site <a href="http://www.dte.org.in/mba">www.dte.org.in/mba</a> for Maharashtra State /OMS/J&K candidates and receipt of the Hall Ticket for the MAH-MBA/MMS-CET 2011.			18-01-2011	03-02-2011	
	3.	<b>Date and timing</b> of the MAH-MBA/MMS-CET 2011			<b>27-02-2010</b>		
	4.	<b>Declaration of the results</b> of the MAH-MBA/MMS-CET 2011 on the website <a href="http://www.dte.org.in/mba">www.dte.org.in/mba</a> .			05-04-2011		
	5.	<b>Registration for the Group Discussions(GD) and Personal Interviews(PI)</b> and receipt of call letter.			12-04-2011	26-04-2011	
	6.	<b>Conduct of GD and PI</b> at select centers.			03-05-2011	31-05-2011	

	7.	<b>Submission of the Work Experience Certificate</b> (In Proforma-G) at SIMSREE, Mumbai only by Registered Post.	03-05-2011	15-05-2011
	8.	Document verification, updation and confirmation of <b>Application Form for Admission</b> at ARC for Maharashtra State/OMS/J&K candidates.	03-05-2011	31-05-2011
	9.	Display of the provisional merit lists (Maharashtra State, All India and J&K candidates) on the web site <a href="http://www.dte.org.in/mba">www.dte.org.in/mba</a> .	09-06-2011	
	10.	Submission of grievance applications of Maharashtra, All India and J&K candidates, if any, at respective ARC.	10-06-2011	11-06-2011
	11.	<b>Display of the final merit lists</b> (Maharashtra State, All India and J&K candidates) on web site <a href="http://www.dte.org.in/mba">www.dte.org.in/mba</a> .	15-06-2011	
<b>PIO Quota</b>	NO			

## 15. Infrastructural Information:

### Class Room:



**Tutorial Room**





## Computer Center Facility



## Auditorium Facility





**Seminar Hall**



**Cafeteria**



**Indoor Sport Facility**

## 16. Hostel

### Boys Hostel

--

### Girls Hostel

--

### Medical and Other Facilities at Hostel



## 17. Academic Sessions

Examination System	Semester Pattern
Period of Declaration of result	February and June

## 18. Counseling/Mentoring

Career Counseling	Available
Medical Facilities	Available
Student Insurance	Available

## 19. Student Activity Body

Culture Activities	Available
--------------------	-----------



<b>Sport Activity</b>	Available
<b>Literary Activity</b>	Available
<b>Magazine/Newsletter</b>	Available
<b>Technical Activity</b>	Available
<b>Industrial Visit</b>	Available
<b>Alumni Activity</b>	Available

**20. Information Officer for RTI**

<b>Name of the Information officer for RTI</b>	Mr. Dhananjay Mandlik
<b>Designation</b>	
<b>Phone number with STD code</b>	
<b>FAX number with STD code</b>	
<b>Email</b>	

**Place : Pune**

**Date : 12/03/2011**

**Prof. Madhuvanti Sathe**

**Director**